

JAMES YONG

INTERLINK



DESIGN

SOLUTIONS

ISSN 2180-4990



9 772180 499004

# INTRODUCTION

The world through my eyes. Growing up in the heritage town of Malacca, Straits Peranakan, Dutch colonial, English colonial influence were often the reference for architecture and design. Tradition has given me the structure and path to explore the meaning of living and working space. I was always interested in creating space. My mum had a fond recollection of my childhood days of playhouse where I moved and rearranged the furniture around the house ever so often. She told me years later that she knew I would be an interior designer. In the case of nature vs nurture, nature comes first.


How do I find a way to express my point of view in the midst of mother of pearl antique furniture and Kam Ching vases? My salvation lies in the pages of magazine which I came across during my college years. It was Felix restaurant 2000 km away in Hong Kong. This piece of modern design classic by Philippe Starck became my aspiration ever since.

Many moons and hundreds of projects later, fast forward to 2010 I would like to present you with my best collection of work which best describe me as a designer, my personality and what I believe in. Design is an art form. There are guidelines which we as design students learn at school but beyond that it is pretty much our free will. It is not unlike someone given a palette of colours and canvass

to start composing. I could be classicist, renaissance, surrealist, post modernist, deconstructionist or all of the above. With the explosion of material and colour available nowadays I am like a child in a candy shop.

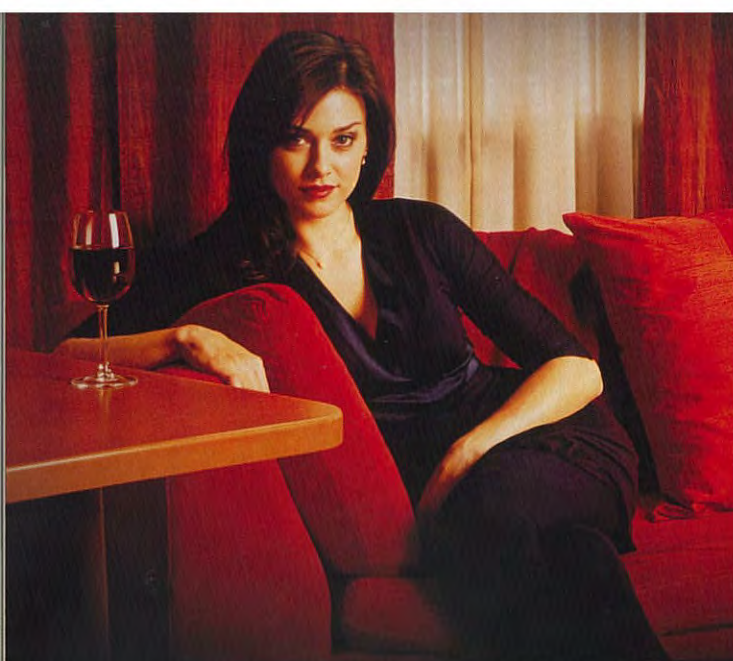
What are noises and voices? Noises are unnecessary information that distort the messages and obscure the clarity of our vision. In the design world, they come in different array of textures and colors, shapes and sizes, transparency and translucency; we could get lost in the noises and lost our voices. What is my point of view? I do not design for the sake of designing. It has to be meaningful. It transpires aesthetics. Is it functional? Ergonomics? My approach is often Scandinavian but infused with my character because I have an affinity for strong wood grain while I like the opulence and the richness of the Italian. Then again I enjoy alfresco dining of the tropics with Asian confucion culture. I am the result of old and new, east and west, indoor and outdoor, traditional and modern, progress and conservation, global and local. Basically, I am the result of this new millennium of globalization and convergence of cultures and civilizations.

I would like to share the fruit of my labour among the following pages for your enjoyment and would like you to see buildings and spaces from my point of view. Design is my life and life is design.



“What is my point of view? I do not design for the sake of designing. It has to be meaningful. It transpires aesthetics. Is it functional? Ergonomics? My approach is often Scandinavian but infused with my character because I have an affinity for strong wood grain while I like the opulence and the richness of the Italian. Basically, I am the result of this new millennium of globalization and convergence of cultures and civilizations.”

- james yong, interior designer



## Get In Touch With Your Inner Designer



DuPont™  
**CORIAN**  
SURFACES  
Private Collection

The CORIAN® Private Collection can create a space as individual as you are. Choose from a range of patterns that reflect the shifting textures and subtle veining of the earth to match your mood.

CORIAN® is non-porous, stains do not penetrate the surface. With proper cleaning, CORIAN® also resists the growth of mold, mildew and bacteria. It is also heat and scratch resistant.

CORIAN® Solid Surfaces for a luxurious and lasting impression.



For more information, contact our authorised distributor:

**TSI Marketing Sdn Bhd**, 10-6-1, 6th Floor, Queen's Avenue, Block 10, Jalan Shelly, 55100 Kuala Lumpur, Malaysia. Tel: [603] 9206 6240/41 | Fax: [603] 9206 6222

Copyright © 2009 E.I du Pont de Nemours and Company. All rights reserved. CORIAN® is a DuPont registered trademark for its solid surfaces. Only DuPont makes CORIAN®. Printed representative of colors may vary from actual sample.  
[www.corian.com](http://www.corian.com)

mail yo  
Pont  
com-G

## anner Designer

ivate Collection can create a space as individual from a range of patterns that reflect the shifting veining of the earth to match your mood.

non-porous, stains do not penetrate the surface. ing, CORIAN® also resists the growth of mold, ia. It is also heat and scratch resistant.

urfaces for a luxurious and lasting impression.



### Clam Shell

A bisque base, with soft nickel and antique brass veins and traces of "barely there" mix of translucent particles that create a soft and entirely natural effect.



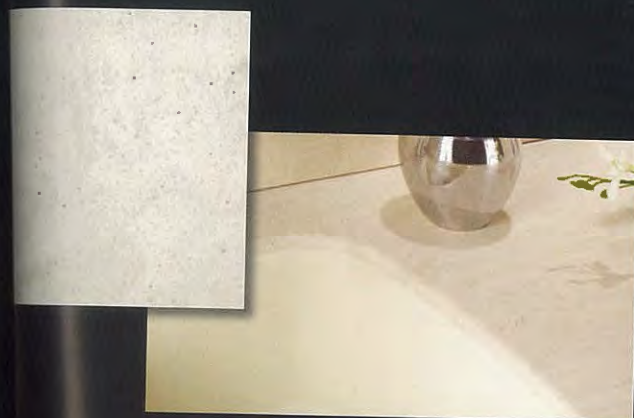
### Cirrus White

Tight, fluid, random veins in a mixture of whites.



### Senora

A coffee latte color base, with espresso bean veins with a mingling of dark to light, medium to small particles for a complex, earthy, rustic effect.



### Rain Cloud

A neutral off-white base, with tender gray veining and traces of "barely there" large translucent and ultra fine dark particles that create a soft and entirely natural effect.



### Tumbleweed

A warm beige base with brown veins that diffuse into a range of variegated beige tones and large translucent particles.



### Lava Rock

A deep warm gray base, with umber and golden veining with a mingling of dark to light, medium to small particles for a complex, earthy, rustic effect.

9206 6240/41 | Fax: [603] 9206 6222

representative of colors may vary from actual sample.

For all your enquiries to: [info.malaysia@mys.dupont.com](mailto:info.malaysia@mys.dupont.com)

Dupont Malaysia Sdn Bhd (530021-T) 6th Floor, Bangunan Samundra, No.1 Jalan Kontraktor U1/14, Seksyen U1, Glenmarie Industrial Park, 40150 Shah Alam, Selangor, Malaysia. Tel: [603] 5569 3006 | Fax: [603] 5569 3008.



The miracles of science™



[www.interlinkdesign.com](http://www.interlinkdesign.com)